



SELF STUDY REPORT

FOR

2nd CYCLE OF ACCREDITATION

ARTS AND COMMERCE COLLEGE BELAPUR

A/P BELAPUR BK., TAL - SHRIRAMPUR, DIST- AHMEDNAGAR 413715

413715

acollegebelapur.org

SSR SUBMITTED DATE: 04-09-2023

Submitted To

NATIONAL ASSESSMENT AND ACCREDITATION COUNCIL

BANGALORE

September 2023

1. EXECUTIVE SUMMARY

1.1 INTRODUCTION

1. Executive Summary.

1.1 Introduction:

The members of 'Belapur Education Society' witnessed the problems of the students from the village for making ups and downs to the institutions where they take their education. The students from the vicinity face the problems of buses and other vehicles to reach that particular educational institution. Most of the girls do not go out of home for further education due to the inconvenience of up-down. The Girl students left their education incomplete. Taking into consideration all these problems, the institution members decided to open a senior college in the village. Accordingly the proposal was sent to the University and state government. Both the authorities sent the approval in positive and the college had been started since 1995.

It is a rural institute located at Belapur (BK).Tal. Shirampur, Dist Ahmednagar. It is 30 km away from Saibaba's Shindi, 30 km away from Sant Dyaneshwar Temple in Newase and 40 km away from Shani-Shignapur. The institution get the flow of students from the nearby villages like Ukkalgaon, Galnimb, Fattyabad, Narsali, Padhegaon, Malunja, Bherdapur, Chandegoan, Pathare, Khudsargar, Mahegoan, Shenwadgoan, Tilapur, Karajgaon etc. The institution has completed 27 years of its existence.

It is a co-education institute, permanently affiliated to Savitribai Phule Pune University, Pune. It is also recognized with 2 (F) and in process for 12 (B) affiliation of the UGC. It was accredited by NAAC with 'B' grade for the first cycle in 2017. It runs 6 undergraduate and different skill courses. Five to hundred students get admissions in the institution each year.

Vision

Vision:

To provide and facilitate qualitative higher educational opportunities to the socio-economically backward and marginalized sections of the society.

Mission

Mission:

1. To provide quality education to the rural students especially the girls.
2. To uplift the rural students to national development.
3. To facilitate the educational opportunities to socially, economically and educationally backward students.
4. To increase the ratio of girls in higher education as well as to develop skills among them,

Our Motto:

"Dnyan Mayo Bhava"

It is one of the Sanskrit slogans. It means what is pure and pious is knowledge. Knowledge is power. A knowledgeable person can change the lives and conditions, surroundings of other people. They can change the attitudes and directions of the people around them. Education makes the person well-cultured. To inculcate this motto among the rural students the education society started 'Arts and Commerce College' in Belapur.

Goals and Objectives:

1. To improve the status of rural masses through education.
2. To achieve academic excellence in higher education.
3. To promote development in rural students and society.
4. To development overall personality of students for their better future.

1.2 Strength, Weakness, Opportunity and Challenges(SWOC)

Institutional Strength

Strengths:

1. Committed faculty members.
2. Good governance and management..
3. Co curricular and extracurricular activities.
4. Instant and quick service.
5. Culture Department.
6. Earn and Learn scheme for the needy students.
7. NSS unit of 150 volunteers.
8. Police pre-recruitment Training.
9. Permanent Affiliation to Savitribai Phule Pune University Pune.
10. Included under 2 (f) of the UGC Act 1956.
11. Offers 6 undergraduate programs.

Institutional Weakness

Weakness:

1. Infrastructural facilities.
2. Physical facilities.
3. Funds for development.
4. Financial weakness of students and parents.

5. Load shedding due to rural areas.
6. Network connectivity problems.
7. No recognized research center.
8. Restrictions on the appointment of permanent staff.

Institutional Opportunity

Opportunities:

1. Employment opportunities.
2. Scope for social service.
3. Scope for women empowerment-
4. Guidance for competitive examinations.
5. Scope in professional courses.
6. Scope to major/minor research projects.
7. To implement National Education Policy 2020.
8. To start a NCC unit.

Institutional Challenge

Challenges:

1. To increase enrollment of students for courses.
2. To increase the number of student placement and promotion to higher education.
3. To receive donations from alumni.
4. To provide advanced knowledge and research facilities.
5. To maintain the interest in studies among students.
6. To have more space for expansion.

1.3 CRITERIA WISE SUMMARY

Curricular Aspects

Criteria 1. Curricular Aspects

1. The institution is affiliated to Savitribai Phule Pune University and it teaches the curriculum prescribed by the same University.
2. The institution offers 6 programs in Marathi, Hindi, English, Politics, Economics and Commerce.
3. It offers skill development certificate courses and other enrichment programmes.
4. The institution follows a proper curriculum planning and implementation-
5. The institution obtains feedback from the students and stakeholders. These are analyzed and utilized for overall development of the institution.
6. Academic Calendars, time-table, teaching plans, ICT tools are used for effective curriculum delivery.

7. The Institution initiated reforms for a continuous Internal Evaluation System.
8. IQAC conducts internal and external academic audits and keeps a constant follow-up action for curricular, co-curricular and extracurricular activities.

Teaching-learning and Evaluation

Criteria 2. Teaching-Learning and Evaluation

1. Transparency and systematic mechanisms are in practice in the admission process. It is elaborated in the prospectus and on the institutional website.
2. The institution assesses the learning levels of the students and organizes special program for advanced learners and slow learners.
3. Student-centric methods, such as experiential learning, participative learning and problem solving methodologies are used for enhancing the learning process.
4. The mechanism of internal assessment is transparent through providing Xerox copies of the written papers.
5. The institution has the mechanism to deal with internal examination related grievances which is transparent, time bound and efficient.
6. Teachers and students are made aware of the stated program and course outcomes of the program offered by the institution.
7. Students Satisfaction survey (SSS) on overall institutional performance.

Research, Innovations and Extension

Criteria 3. Research, Innovations And Extension :

1. Seminars, conferences and workshops are conducted by the institution.
2. Research culture flourished and publication awards were received by some faculty members.
3. Extension activities are carried out in the neighborhood community, sensitizing students to social issues, for their holistic development.
4. Extension and outreach programs are conducted by the institution through NSS including programs such as Swachh Bharat, AIDS Awareness, Gender Issues etc.
5. The institute received a state level award the excellence in 2022 from 'Dongre Pratisthan Parner'.
6. The institution has adopted a village Belapur Khurd for its overall development.

Infrastructure and Learning Resources

Criteria 4. Infrastructure and Learning Resources:

1. The institution has adequate infrastructure and physical facilities for teaching and learning.
2. The institution also has adequate facilities for cultural, sports, Games (indoors and outdoors) Gym and yoga center.
3. Library is automated with library manager software. It consists of modules like book accession, OPAC catalog and administration.
4. A Local Area Network (LAN) and CCTV cameras are installed in the campus area.

5. The institution has its own system and procedures for maintaining and utilizing physical, academic and support facilities.
6. Audited statements of all accounts are update.

Student Support and Progression

Criteria 5. Students Support and Progression:

1. The institution has a well-defined mechanism for student support and progression, a well-defined mentor mentee mechanism is in function for student support. The various committees work effectively to ensure the curricular, co-curricular and extracurricular activities.
2. 2363 students out of 2999 are benefited by scholarship and free ships received by the government during the last five years.
3. Capacity building and skill enhancement initiatives are taken by the institution..
4. Some of the students are benefited by guidance for competitive examinations and career counseling offered by the institution.
5. The institution has transparent mechanisms for timely redressal of student grievances including sexual harassment and ragging cases. Happy to say, yet no case of such type.
6. Some students quality state level and state government examinations.
7. The Institution facilitates students' representation and engagement in various administrative, co curricular and extracurricular activities.

Governance, Leadership and Management

Criteria 6. Governance, Leadership and Management

1. Belapur Education Society is the parent body of the institution which is at the top of the organogram.
2. The governance of the institution is defluctive of and in tune with the vision and mission of the institution.
3. The effective leadership is visible in various institutional practices such as decentralization and participative management.
4. CDC and IQAC works effectively And implementation of academic and administrative policies.
5. The institution has effective welfare measures for teaching and non-teaching staff. It provides duty leave, registration fees TA/DA, Medical Bills, legal documents for loans, insurance etc.
6. The institution has a performance and appraisal system for its staff. The seceed is kept update
7. IQAC promotes quality teaching-learning, research, governance, students support and progression.

Institutional Values and Best Practices

Criteria 7. Institutional Values and Best Practices:

1. The institution takes efforts to maintain gender equity at all levels in the campus and the institute provides facilities by organizing co-curricular and extracurricular activities.
2. The facilities for the management of degradable and non-degradable waste are available.
3. Water conservation facilities like rain-water harvesting, bore well recharge are all available.

4. The institution takes lead in providing an inclusive environment for tolerance and harmony towards cultural, regional, linguistic, communal and socio-economic and other diversities.
5. The institution celebrates national and international commemorative days, events and festivals.
6. The institution has best practices of 'Karate Training Course' and 'Anand Bazar'. More students are benefited by the practice.

2. PROFILE

2.1 BASIC INFORMATION

Name and Address of the College	
Name	ARTS AND COMMERCE COLLEGE BELAPUR
Address	A/P Belapur Bk., Tal - Shirampur, Dist- Ahmednagar 413715
City	Belapur
State	Maharashtra
Pin	413715
Website	acollegebelapur.org

Contacts for Communication					
Designation	Name	Telephone with STD Code	Mobile	Fax	Email
Principal	Kokate Gumphapatilba	02422-243748		-	
IQAC / CIQA coordinator	Pawar Babasaheb Nanasahab	02422-244466	7972318441	-	bnpawar81@gmail.com

Status of the Institution	
Institution Status	Grant-in-aid

Type of Institution	
By Gender	Co-education
By Shift	Day

Recognized Minority institution	
If it is a recognized minority institution	No

Establishment Details

State	University name	Document
Maharashtra	Savitribai Phule Pune University	View Document

Details of UGC recognition		
Under Section	Date	View Document
2f of UGC	28-03-2022	View Document
12B of UGC		

Details of recognition/approval by stationary/regulatory bodies like AICTE,NCTE,MCI,DCI,PCI,RCI etc(other than UGC)				
Statutory Regulatory Authority	Recognition/Approval details Institution/Department programme	Day,Month and year(dd-mm-yyyy)	Validity in months	Remarks
No contents				

Recognitions	
Is the College recognized by UGC as a College with Potential for Excellence(CPE)?	No
Is the College recognized for its performance by any other governmental agency?	No

Location and Area of Campus				
Campus Type	Address	Location*	Campus Area in Acres	Built up Area in sq.mts.
Main campus area	A/P Belapur Bk., Tal - Shrirampur, Dist- Ahmednagar 413715	Rural	1.75	1450

2.2 ACADEMIC INFORMATION

Details of Programmes Offered by the College (Give Data for Current Academic year)						
Programme Level	Name of Programme/Course	Duration in Months	Entry Qualification	Medium of Instruction	Sanctioned Strength	No.of Students Admitted
UG	BA,English	36	HSC or Equivalent	English	30	13
UG	BA,Marathi	36	HSC or Equivalent	Marathi	30	12
UG	BA,Hindi	36	HSC or Equivalent	Hindi	30	18
UG	BA,Politics	36	HSC or Equivalent	Marathi	30	24
UG	BA,Economics	36	HSC or Equivalent	Marathi	30	11
UG	BCom,Commerce	36	HSC or Equivalent	English,Marathi	120	110

Position Details of Faculty & Staff in the College

Teaching Faculty												
	Professor				Associate Professor				Assistant Professor			
	Male	Female	Others	Total	Male	Female	Others	Total	Male	Female	Others	Total
Sanctioned by the UGC /University State Government	1				3				12			
Recruited	0	1	0	1	2	1	0	3	12	0	0	12
Yet to Recruit	0				0				0			
Sanctioned by the Management/Society or Other Authorized Bodies	0				0				0			
Recruited	0	0	0	0	0	0	0	0	0	0	0	0
Yet to Recruit	0				0				0			

Non-Teaching Staff				
	Male	Female	Others	Total
Sanctioned by the UGC /University State Government				11
Recruited	7	1	0	8
Yet to Recruit				3
Sanctioned by the Management/Society or Other Authorized Bodies				0
Recruited	0	0	0	0
Yet to Recruit				0

Technical Staff				
	Male	Female	Others	Total
Sanctioned by the UGC /University State Government				0
Recruited	0	0	0	0
Yet to Recruit				0
Sanctioned by the Management/Society or Other Authorized Bodies				0
Recruited	0	0	0	0
Yet to Recruit				0

Qualification Details of the Teaching Staff

Permanent Teachers										
Highest Qualification	Professor			Associate Professor			Assistant Professor			Total
	Male	Female	Others	Male	Female	Others	Male	Female	Others	
D.sc/D.Litt/LLD/DM/MCH	0	0	0	0	0	0	0	0	0	0
Ph.D.	0	1	0	1	0	0	6	0	0	8
M.Phil.	0	1	0	2	0	0	1	0	0	4
PG	0	0	0	0	0	0	0	0	0	0
UG	0	0	0	0	0	0	0	0	0	0

Temporary Teachers										
Highest Qualification	Professor			Associate Professor			Assistant Professor			Total
	Male	Female	Others	Male	Female	Others	Male	Female	Others	
D.sc/D.Litt/LLD/DM/MCH	0	0	0	0	0	0	0	0	0	0
Ph.D.	0	0	0	0	0	0	0	1	0	1
M.Phil.	0	0	0	0	0	0	0	0	0	0
PG	0	0	0	0	0	0	1	1	0	2
UG	0	0	0	0	0	0	0	0	0	0

Part Time Teachers										
Highest Qualification	Professor			Associate Professor			Assistant Professor			Total
	Male	Female	Others	Male	Female	Others	Male	Female	Others	
D.sc/D.Litt/LLD/DM/MCH	0	0	0	0	0	0	0	0	0	0
Ph.D.	0	0	0	0	0	0	0	0	0	0
M.Phil.	0	0	0	0	0	0	0	0	0	0
PG	0	0	0	0	0	0	1	2	0	3
UG	0	0	0	0	0	0	0	0	0	0

Details of Visting/Guest Faculties					
Number of Visiting/Guest Faculty engaged with the college?	Male		Female		Total
		13	4	0	

Provide the Following Details of Students Enrolled in the College During the Current Academic Year

Programme		From the State Where College is Located	From Other States of India	NRI Students	Foreign Students	Total
UG	Male	296	0	0	0	296
	Female	287	0	0	0	287
	Others	0	0	0	0	0

Provide the Following Details of Students admitted to the College During the last four Academic Years					
Category		Year 1	Year 2	Year 3	Year 4
SC	Male	51	39	28	42
	Female	54	57	63	54
	Others	0	0	0	0
ST	Male	23	11	29	18
	Female	14	14	15	19
	Others	0	0	0	0
OBC	Male	59	52	39	59
	Female	81	78	57	65
	Others	0	0	0	0
General	Male	138	130	109	137
	Female	163	162	152	143
	Others	0	0	0	0
Others	Male	21	29	31	40
	Female	40	35	31	34
	Others	0	0	0	0
Total		644	607	554	611

Institutional preparedness for NEP

1. Multidisciplinary/interdisciplinary:	<p>Multidisciplinary:-</p> <ul style="list-style-type: none"> • Students are asked to understand a single subject. • It can open student's eyes to different views of a subject. • It allows the students to learn & explore distinct subjects or curriculum. • Not limited to a particular discipline. <p>Interdisciplinary:-</p> <ul style="list-style-type: none"> • It increases student learning engaging students and helping them to develop Knowledge. • It generates an understanding of themes and ideas. • It involves considering different points of view, comparing and understanding.
2. Academic bank of credits (ABC):	<ul style="list-style-type: none"> • Academic bank of credits (ABC) is virtual/digital storehouse that contains the information of the credits earned by individual students throughout their

	learning years. • It enables students to open their accounts and give multiple options for entering and leaving colleges.
3. Skill development:	<ul style="list-style-type: none"> • The responsibility to train youth by providing them skills. • It is the process of identification of skill in youth and provide training for employment benefits. • It increase productivity and improve standards of living. • It improves cognitive socio-emotional technical and digital skill among students.
4. Appropriate integration of Indian Knowledge system (teaching in Indian Language, culture, using online course):	<ul style="list-style-type: none"> • Integration process involves the basic introduction to Indian knowledge system its nature structure scope history. • It covers the concepts into modern textbooks which could be taught online audio visual aids. • It makes available all the provisions relating to promotion of Indian languages and culture. • Indian knowledge system should be a part of mainstream of online education system.
5. Focus on Outcome based education (OBE):	<ul style="list-style-type: none"> • It conducts evaluation of students and create reports. • Online examinations are made easy for students. • It encourages teachers to learn the right skills to impart the necessary knowledge required by today's students. • It brings clarity among the teachers and students. • Completely involves students taking responsibility for their goals. • It provides more than one method of learning.
6. Distance education/online education:	<ul style="list-style-type: none"> • The institution does not provide distance education that the parent university provides this facility to the students who apply for it. • Online education provides e-learning and online learning form of education. • It includes physical separation of student and teachers.

Institutional Initiatives for Electoral Literacy

1. Whether Electoral Literacy Club (ELC) has been set up in the College?	Yes, the institute Arts and Commerce College had established Electoral Literacy Club (ELC) since the academic year 2017-18.
2. Whether students' co-ordinator and co-ordinating faculty members are appointed by the College and whether the ELCs are functional? Whether the ELCs are representative in character?	The college has constituted ELC consisting of the student representative as a Student Coordinator, faculty coordinator, and members. The college has established the Electoral Literacy Cell (ELC) to engage student's youth through activities, to sensitize

	<p>them on their electoral rights, and to familiarize them with the electoral process of registration and voting. It aims at strengthening the culture of electoral participation among young and future voters.</p> <p>Objectives of Electoral Literacy Cell: • To promote awareness of 'Right to vote' among students, faculty members and community. • To educate the voters to build a truly participative democracy • To develop a culture of electoral participation and maximize the ethical voting and follow the principle 'Every vote counts' and 'No voters to be left behind'. • The Committee works as the instructions and guidelines of Taluka Tahsildar and SDM. Sr.No Name of the Members Designation 1 Dr. G.P. Kokate Chairman 2 Dr. B.N Pawar Faculty Coordinator 3 Dr V. N Kale Faculty Coordinator 4 Mr P. D Deshpande Member 5 Mr. Prafulla Khapake Students Coordinator 6 Miss. Ujjawala Kandalkar Students Coordinator</p>
<p>3. What innovative programmes and initiatives undertaken by the ELCs? These may include voluntary contribution by the students in electoral processes-participation in voter registration of students and communities where they come from, assisting district election administration in conduct of poll, voter awareness campaigns, promotion of ethical voting, enhancing participation of the under privileged sections of society especially transgender, commercial sex workers, disabled persons, senior citizens, etc.</p>	<ul style="list-style-type: none"> • The institution celebrates every year Voters' Day to create awareness among the students and highlighting their contribution to advancing democratic values and participation in electoral processes, etc. • The college has organized various activities and programs to promote electoral literacy among the student's youth and community. • Constitutional Day is celebrated every year to aware stakeholders of the constitutional values and contribution of the Constitution in Indian Democracy with the pledge. • National Voters Day celebrated every year to educate stakeholders and the community about electoral rights, processes, and duties to strengthen a truly participative democracy. • Awareness programme was organized to educate the student and community by EC authorities about the use of Electoral Voting Machines (EVM) and VVPAT machine in the electoral process. • Voter Registration campaigns for students in the campus. • Voter awareness rallies conducted at Belapur village.
<p>4. Any socially relevant projects/initiatives taken by College in electoral related issues especially research projects, surveys, awareness drives, creating content, publications highlighting their contribution to advancing democratic values and participation in electoral processes, etc.</p>	<ul style="list-style-type: none"> • On the occasion of Voters day, the rally was organized to aware the stakeholders and community build a stronger democracy through the electoral process with help of hoardings and banners comprising slogans about the event. • On the occasion of voters day students took pledge to participate in the electoral process with safeguard and democratic values. • Expert talks on Constitutional Values are organized in the college. • Graduate

	<p>Constituency voter registration drive conducted in college. • Teachers Constituency voter registration drive conducted in college.</p>
<p>5. Extent of students above 18 years who are yet to be enrolled as voters in the electoral roll and efforts by ELCs as well as efforts by the College to institutionalize mechanisms to register eligible students as voters.</p>	<p>• The institution motivates students above 18 years who are to be enrolled as voters are sensitized about democratic rights which include casting votes in elections. • We conduct various activities viz. Rallies, Street play, Voter registration camp, Voters' Day to create awareness regarding electoral procedures among the stakeholders. • Voter registration drive also conducted at Institute for above 18 yrs of age students. • The institute takes efforts for the registration of Nashik Graduate Constituency, Maharashtra State as well as various academic bodies of Savitribai Phule Pune University, Pune elections.</p>

Extended Profile

1 Students

1.1

Number of students year wise during the last five years

2021-22	2020-21	2019-20	2018-19	2017-18
583	611	554	607	644

File Description	Document
Upload supporting document	View Document
Institutional data in the prescribed format	View Document

2 Teachers

2.1

Number of teaching staff / full time teachers during the last five years (Without repeat count):

Response: 16

File Description	Document
Upload supporting document	View Document
Institutional data in the prescribed format	View Document

2.2

Number of teaching staff / full time teachers year wise during the last five years

2021-22	2020-21	2019-20	2018-19	2017-18
16	16	16	16	16

3 Institution

3.1

Expenditure excluding salary component year wise during the last five years (INR in lakhs)

2021-22	2020-21	2019-20	2018-19	2017-18
04	0.5	00	6.5	04

4. Quality Indicator Framework(QIF)

Criterion 1 - Curricular Aspects

1.1 Curricular Planning and Implementation

1.1.1

The Institution ensures effective curriculum planning and delivery through a well-planned and documented process including Academic calendar and conduct of continuous internal Assessment

Response:

1.1.1: The Institution ensures effective curriculum delivery through a well planned and documented process including Academic calendar and conduct of continuous internal Assessment

Time Table

- The time table committee of the Institution prepares a time table taking into considerations of the parent University for the effective implementation of the curriculum.

Academic Calendar

- The Institution Prepare its academic calendar before the
- commencement of every academic year. This academic calendar includes curricular, co-curricular and extracurricular activities.

Teaching Plans

- The Institution gives teacher's diary to prepare and maintain daily teaching records.
- The teacher's dairy includes individual time table, details regarding leave record, syllabus, annual planning, monthly report, weekly teaching record, record of administrative, cocurricular and extra-curricular works.

Mid Semester examinations

- Mid semester examinations are conducted for internal assessments. It includes assignments, seminars, test and tutorials, open book test, group discussions etc.

Feedback

- At the end of every academic year, feedback is collected and evaluated by the IQAC committee and the suggestions are considered for the better improvements.

Follow Up

- The HOD reviews the departmental performance.
- The HOI suggests the preventive and corrective measures for the improvements.

Other Processes

- Industrial visits, study tours, project works are conducted.
- The lectures of experts are arranged at available time.

The institution and adheres to the academic calendar including for the conduct of continues internal evaluation as:

- The Institution prepares the academic calendar according to SOPs of management (Standard operating Procedure) with the help of IQAC, HODS and committee members.
- The teachers submit the Annual Teaching Report (ATR) of each activity as per academic calendar at the end of each month.
- The library of the Institution provides books, journals, e-library to facilitate their teaching improvements.
- The curriculum is effectively implemented through regular lectures, PPT, Class room seminars, practical works, home assignments and project works.
- Semester end examinations are conducted at the end.
- Practical and oral examinations are conducted for different subjects as per the norms of parent university.
- The University examinations are conducted as per university schedule for B.A. and B.Com. Programmes.
- Feedback is collected and evaluated by the IQAC and suggestions are considered for the improvements.
- The Institution promotes its teachers to participate in different programmers run by the parent University to keep their knowledge update.
- The Institution also strictly adheres to the academic calendar for cultural activities, sports competitions, oral, practical and written examinations etc.

File Description	Document
Upload Additional information	View Document

1.2 Academic Flexibility**1.2.1**

Number of Add on /Certificate/Value added programs offered during the last five years

Response: 3

File Description	Document
Upload supporting document	View Document
Institutional data in the prescribed format	View Document

1.2.2

Percentage of students enrolled in Certificate/ Add-on/Value added programs as against the total number of students during the last five years

Response: 25.81

1.2.2.1 Number of students enrolled in subject related Certificate/ Add-on/Value added programs year wise during last five years

2021-22	2020-21	2019-20	2018-19	2017-18
80	40	339	315	0

File Description**Document**

Upload supporting document

[View Document](#)

Institutional data in the prescribed format

[View Document](#)

1.3 Curriculum Enrichment**1.3.1**

Institution integrates crosscutting issues relevant to Professional Ethics, Gender, Human Values, Environment and Sustainability into the Curriculum

Response:

The Institution integrates crosscutting issues relevant to Professional Ethics, Gender, Human Values, Environment and Sustainability into the Curriculum as follows-

Professional Ethics:

- The institution conducts soft skill development programmes and lectures on career guidance for the students.
- Conducts computer literacy programme for employability for students.
- The institution guides its students for employability and displays the advertisements on notice boards.

Gender:

- The Institution is well aware of gender sensitization as it provides co-education.
- Organize different programmes to abolish the gender discrepancies among students.
- Pay more attention to woman empowerment and takes care of female problems and difficulties.

Human Values:

- The Institution conducts various activities like celebration of different festivals.
- Birth and Death Anniversaries of Great National, International heroes /Leaders.

Environment:

- Conducts lectures on the environment education as the part of syllabus.
- Make arrangements for rallies on environmental issues for the awareness among society.
- Eco Friendly activities like cleanliness ban of plastic etc.
- Insists on the use of bicycles.

The Savitribai Phule Pune University designs the curriculum and it is strictly implemented by the institution as follows:-

- The institution promotes faculty member to participate in syllabus framing workshops in which they give their valuable suggestions to the board of studies.
- The institution is in touch with the knowledge regarding curriculum and many other activities of the university.
- The parent university communicates all the notifications through its website and e-notification.
- The faculty are also always in touch with the Board of Studies B.C.U.D. and University authorities for the overall development.
- Most of the faculty members contributed to the development of the curriculum.
- All the faculty members regularly participate in the seminars, workshops, conferences and provide valuable suggestions to the Board of Studies.
- Institution has conducted and prepared a time table for bridge courses for the subjects like Accountancy, Mathematics and Statistics, Economics for the students of Commerce.
- The institution ensures that the stated objectives of curriculum are achieved.
- Reviews the syllabus completion report at the end of each term by HOI.
- Analysis of the feedback from the students and stakeholders.
- Conducts academic audit regularly for the completion of the work assignments.
- Also reviews the performance of the students in various examinations.
- Along with the curriculum the institution pays attention to improve soft skills, personality development, communication skills, socialization and mobilization of the students.

File Description	Document
Upload Additional information	View Document

1.3.2

Percentage of students undertaking project work/field work/ internships (Data for the latest completed academic year)

Response: 33.96

1.3.2.1 Number of students undertaking project work/field work / internships

Response: 198

File Description	Document
Upload supporting document	View Document
Institutional data in the prescribed format	View Document

1.4 Feedback System**1.4.1**

Institution obtains feedback on the academic performance and ambience of the institution from various stakeholders, such as Students, Teachers, Employers, Alumni etc. and action taken report on the feedback is made available on institutional website (Yes or No)

Response: Yes

File Description	Document
Upload supporting document	View Document

Criterion 2 - Teaching-learning and Evaluation

2.1 Student Enrollment and Profile

2.1.1

Enrolment percentage

Response: 83.31

2.1.1.1 Number of students admitted year wise during last five years

2021-22	2020-21	2019-20	2018-19	2017-18
583	611	554	607	644

2.1.1.2 Number of sanctioned seats year wise during last five years

2021-22	2020-21	2019-20	2018-19	2017-18
720	720	720	720	720

File Description

Document

Upload supporting document

[View Document](#)

Institutional data in the prescribed format

[View Document](#)

2.1.2

Percentage of seats filled against seats reserved for various categories (SC, ST, OBC, Divyangjan, etc. as per applicable reservation policy) during the last five years (Exclusive of supernumerary seats)

Response: 92.43

2.1.2.1 Number of actual students admitted from the reserved categories year - wise during the last five years

2021-22	2020-21	2019-20	2018-19	2017-18
316	332	293	315	343

2.1.2.2 Number of seats earmarked for reserved category as per GOI/ State Govt rule year wise during the last five years

2021-22	2020-21	2019-20	2018-19	2017-18
346	346	346	346	346

File Description	Document
Upload supporting document	View Document
Institutional data in the prescribed format	View Document

2.2 Student Teacher Ratio**2.2.1**

Student – Full time Teacher Ratio
(Data for the latest completed academic year)

Response: 36.44

2.3 Teaching- Learning Process**2.3.1**

Student centric methods, such as experiential learning, participative learning and problem solving methodologies are used for enhancing learning experiences using ICT tools

Response:

1) Experimental Learning:

- All faculties make use of ICT, PPT and virtual learning process.
- Study tour, surveys and industrial visits are arranged.
- Project works are given to the students.
- Students are encouraged to participate in state and national level seminar, workshops and webinars.
- Some home assignment are provided to the students.
- Group discussions, role play, poster presentations, debating competitions and communication skills are in practice.
- Computers, Internet and library, resources are provided to improve and update knowledge.
- The National Service Scheme preaches the moral and ethical values, social services at the field with experiments.

2) Participative Learning:

- Classroom seminars are conducted for the active participation of the students.
- Group discussions of the students are arranged in the classes.
- Minor/major issues are given to conduct the debates.
- Quiz and questioning methods are applied.
- Poetry recitation, Elocution competitions are arranged.
- Interactive sessions in the class are conducted.
- Different competitions like essay writing, posters etc are arranged.
- Role plays, street plays, rallies are conducted.
- Experts, motivational speakers are called to guide students.
- Cultural programs, poetry recitation sports activities, cultural activities enhance participative learning of the students.

3) Problem solving Methodology:

- All academic departments are using this method successfully for enhancing the learning experiences of the students.
- Problem regarding the syllabus are cleared instantly.
- Faculties also personally guide the students for their problems.

4) ICT Enabled Tools for Effective Teaching-Learning:

- Google class-rooms are conducted to teach the curricular syllabus
- Zoom meetings and lectures are conducted for the students.
- The students are asked to participate in the Microsoft team.
- Curricular, co-curricular and extracurricular are conducted with the help of Google Meet.
- Students are inspired to start you-tube channels and make viral them thoughtful materials.
- Students and teachers are promoted to write on blogs.
- Students/teachers are asked to create their personal websites for educational purpose.
- The facilities provide the students with e-consent regarding the syllabus.
- The teachers conducted internal and the university examinations with the use of Google forms.
- The library facilitates the students with DVDs, CDs, maps and charts.
- Library provides internet and E-library software packages.
- The Language Laboratory provides lingua phones.
- Some of the teachers make use of PPT (Power Point Presentations).
- Computer lab provides computers and internet facilities.
- Lectures of the eminent personalities are delivered with PPT for the effective teaching-learning. Online lectures are conducted in pandemic situation.
- Students are motivated to attend online webinars.
- The teachers make use of VLC for effective teaching learning.

File Description	Document
Upload Additional information	View Document
Provide Link for Additional information	View Document

2.4 Teacher Profile and Quality

2.4.1

Percentage of full-time teachers against sanctioned posts during the last five years

Response: 100

2.4.1.1 Number of Sanctioned posts / required positions for teaching staff/ full time teachers year wise during the last five years:

2021-22	2020-21	2019-20	2018-19	2017-18
16	16	16	16	16

File Description	Document
Upload supporting document	View Document

2.4.2

Percentage of full time teachers with NET/SET/SLET/ Ph. D. / D.M. / M.Ch. / D.N.B Superspeciality / D.Sc. / D.Litt. during the last five years (consider only highest degree for count)

Response: 48.75

2.4.2.1 Number of full time teachers with NET/SET/SLET/Ph. D. / D.M. / M.Ch. / D.N.B Superspeciality / D.Sc. / D.Litt. year wise during the last five years

2021-22	2020-21	2019-20	2018-19	2017-18
10	09	08	06	06

File Description	Document
Upload supporting document	View Document
Institutional data in the prescribed format	View Document

2.5 Evaluation Process and Reforms

2.5.1

Mechanism of internal/ external assessment is transparent and the grievance redressal system is time- bound and efficient

Response:

- Mechanism of internal and external assessment and transparent and robust in terms of frequency and Mode.
- The institution ensures that the students and teachers are aware of assessment and evaluation process.
- Examination committee informs about all examinations to the students and the teachers.
- The Savitribai Phule Pune University publishes the details of the examinations on its website.
- The instructions regarding the internal assessment like fees, rules etc. are displayed on notice board.
- Teachers are communicated with updates about the internal assessments at college level as well as central assessment programs centers by written notifications.
- The transparency is brought by providing the xerox copies of the written papers.
- Academic calendar is strictly followed for the smooth conduction of the examinations.
- Instruction are given to respective teachers regarding internal assessment.
- All record is preserved for further correspondence to the students.
- Complaints and problems like mistakes in the names, subjects are solved.
- Complaints about verification and revaluation are made clear.
- Texts and tutorials are conducted and the results are shown to the students, and in case of unsatisfactory results retests are conducted.
- Practical examinations, viva-voice, oral examinations and project works also fulfill the same purpose of the summative evaluation.
- The institution has the mechanism to deal with internal examinations related grievances which is also transparent, time-bound and efficient.
- The institution has adopted the internal evaluation reforms of the affiliated university.
- The institution have also some reforms of its own tor the internal evaluation/examination for greater transparency.
- The institution displays notices on notice boards and also make phone calls, send messages on the groups of subjects to students regarding their internal examinations.
- The institution provides a photo copy of answer papers to the students as per their demand.
- College Examination officers is appointed by the institution as per the norms of the parent university.
- The internal examinations of all first year UG students are conducted by the institution itself. It includes tests, tutorials, semester and examinations are examinations, projects etc.
- The marks lists are prepared by the teachers and checked by the Head of the institution and duly signed.
- The institution strongly observes all the procedures, code of conduct of internal examinations and transparency of rules and regulations.

File Description	Document
Upload Additional information	View Document
Provide Link for Additional information	View Document

2.6 Student Performance and Learning Outcomes

2.6.1

Programme Outcomes (POs) and Course Outcomes (COs) for all Programmes offered by the institution are stated and displayed on website and attainment of POs and COs are evaluated

Response:

- Student performance and learning outcomes are measured by the institution with certain point.
- Teachers and students are very well aware of the stated programs and course outcomes.
- The vision, mission and objectives reflects the institutional program outcome.
- The HOI, in the opening speech of every academic year, makes aware the students and staff about learning outcome.
- Orientation programs, before the introduction of new syllabus, are conducted by the parent university to decide the Pos and cos.
- POs, COs, PSOs are update at the introduction of new academic year.
- At the introduction of the new syllabus, the POs, and COs are clearly stated by the institution.
- HOD and the subject teacher make aware the students about the programs outcomes and course outcomes in the class.
- Teaching plans and timetable is prepared according to the POs and COs.
- PSOs are prepared by the respective departments.
- POs, COs and PSOs are displayed on the notice board.
- The library of the institution provides the adequate books and other material to the students to achieve the POs and Cos.
- POs and COs are regularly communicated to the students through interactions.
- The institution keeps keen watch on POs and COs and PSO: through its IQAC.

The Evaluation of the attainment of POs and COs:-

- The institution has stated its program outcomes and course outcomes. The students and teachers are made aware of these throughout the academic year.
- The Vision Mission and the objectives of the institution reflects its learning outcomes.
- The expected outcomes are also clearly stated by the affiliated university in the objectives of the learning subjects.
- The learning outcomes are also clearly communicated to the students by interactions.
- The HOI presents institutional learning outcomes and performance report.
- The HOI in his opening speech makes aware the students and staff about learning outcomes.
- The attainment of programs outcomes and course outcomes are calculated by using direct methods.

- Teaching Learning feedback are collected and analyzed by the IQAC of the institution at the end of the academic year.
- Update record of the results is kept by the examination committee.
- The institutional academic calendar as per the norms of the parent university to facilitate the program outcomes.
- Teaching plans, Teaching diaries and timetable are prepared to support the POs and COs.
- The institution gives more scope for the attainment of POs and COs to uplift its students.

File Description	Document
Upload Additional information	View Document
Provide Link for Additional information	View Document

2.6.2

Pass percentage of Students during last five years

Response: 75.91

2.6.2.1 Number of final year students who passed the university examination year wise during the last five years

2021-22	2020-21	2019-20	2018-19	2017-18
146	150	112	64	73

2.6.2.2 Number of final year students who appeared for the university examination year-wise during the last five years

2021-22	2020-21	2019-20	2018-19	2017-18
162	172	127	119	138

File Description	Document
Upload supporting document	View Document
Institutional data in the prescribed format	View Document

2.7 Student Satisfaction Survey

2.7.1

Online student satisfaction survey regarding teaching learning process**Response:**

File Description	Document
Upload database of all students on roll	View Document

Criterion 3 - Research, Innovations and Extension

3.1 Resource Mobilization for Research

3.1.1

Grants received from Government and non-governmental agencies for research projects / endowments in the institution during the last five years (INR in Lakhs)

Response: 0

3.1.1.1 Total Grants from Government and non-governmental agencies for research projects , endowments, Chairs in the institution during the last five years (INR in Lakhs)

2021-22	2020-21	2019-20	2018-19	2017-18
00	00	00	00	00

File Description

Document

Upload supporting document

[View Document](#)

Institutional data in the prescribed format

[View Document](#)

3.2 Innovation Ecosystem

3.2.1

Institution has created an ecosystem for innovations and has initiatives for creation and transfer of knowledge

Response:

3.2.1: Institution has created an ecosystem for innovations and has initiatives for creation and transfer of knowledge

- Institution has not well defined eco system for innovation but it has certain initiatives for creation of transfer of knowledge.
- It arranges some field trips.
- The facilities are exchanges for examination purpose, guest lectures, knowledge sharing.
- Some of the faculties work as research scholars in another institute as guides for M.Phil, PhD degrees.
- No the jobs training programs, workshop is arranged in the Institution for students.
- NSS Department provides facilities to participate in different festivals and programs.
- Sport department send players in different colleges and universities.
- Most of the faculties go to examine moderate papers in other institutions.

- Faculties participate as question paper setters in the parent university.
- The institution arranges different cultural programs in its premises.

File Description	Document
Upload Additional information	View Document
Provide Link for Additional information	View Document

3.2.2

Number of workshops/seminars/conferences including on Research Methodology, Intellectual Property Rights (IPR) and entrepreneurship conducted during the last five years

Response: 3

3.2.2.1 Total number of workshops/seminars/conferences including programs conducted on Research Methodology, Intellectual Property Rights (IPR) and entrepreneurship year wise during last five years

2021-22	2020-21	2019-20	2018-19	2017-18
03	00	00	00	00

File Description	Document
Upload supporting document	View Document
Institutional data in the prescribed format	View Document

3.3 Research Publications and Awards

3.3.1

Number of research papers published per teacher in the Journals notified on UGC care list during the last five years

Response: 4.5

3.3.1.1 Number of research papers in the Journals notified on UGC CARE list year wise during the last five years

2021-22	2020-21	2019-20	2018-19	2017-18
21	11	15	14	11

File Description	Document
Upload supporting document	View Document
Institutional data in the prescribed format	View Document

3.3.2

Number of books and chapters in edited volumes/books published and papers published in national/ international conference proceedings per teacher during last five years

Response: 0.81

3.3.2.1 Total number of books and chapters in edited volumes/books published and papers in national/ international conference proceedings year wise during last five years

2021-22	2020-21	2019-20	2018-19	2017-18
08	01	02	00	02

File Description	Document
Upload supporting document	View Document
Institutional data in the prescribed format	View Document

3.4 Extension Activities

3.4.1

Extension activities are carried out in the neighborhood community, sensitizing students to social issues, for their holistic development, and impact thereof during the last five years.

Response:

Extension activities are carried out in the neighborhood community, sensitizing students to social issues, for their holistic development and impact as follows-

- The Programmes like health awareness, blood donation, AIDS awareness campaign, field surveys, Sant Gadage Baba Gram Swachhata Abhiyan, Samarth Bharat Abhiyan, Female feticide

campaign, Disaster mans, senior citizen lecture series are conducted at regular intervals.

- Many other services like helping poor students, teaching ethical and moral values, technical farming advice, save water and energy programmes are conducted.
- National issues like ‘Save Girl Child’ ‘Global Warming’ ‘Voters Awareness Programmes’ are conducted by opening rallies by the institution.
- Social economic issues like, woman reservation policy, woman empowerment, Enterpronerial Development are arranged.
- Environmental issues like ‘Tree Plantation Water’ management, waste management are in full practice.
- Health and Hygiene programmes like HB checking, Health checkup programmes, Blood donation, covid-19 awareness,
- All these activities impact on the overall development or the Students as follows:
- It promotes awareness about social responsibility among students.
- It inculcates discipline and social responsibility among students.
- It helps to improve physical and mental health of the students.

File Description	Document
Upload Additional information	View Document
Provide Link for Additional information	View Document

3.4.2

Awards and recognitions received for extension activities from government / government recognised bodies

Response:

Extension activities are carried out in the neighborhood community, sensitizing students to social issues, for their holistic development and impact as follows-

- The Programmes like health awareness, blood donation, AIDS awareness campaign, field surveys, Sant Gadage Baba Gram Swachhata Abhiyan, Samarth Bharat Abhiyan, Female feticide campaign, Disaster mans, senior citizen lecture series are conducted at regular intervals.
- Many other services like helping poor students, teaching ethical and moral values, technical farming advice, save water and energy programmes are conducted.
- National issues like ‘Save Girl Child’ ‘Global Warming’ ‘Voters Awareness Programmes’ are conducted by opening rallies by the institution.
- Social economic issues like, woman reservation policy, woman empowerment, Enterpronerial Development are arranged.
- Environmental issues like ‘Tree Plantation Water’ management, waste management are in full practice.
- Health and Hygiene programmes like HB checking, Health checkup programmes, Blood donation, covid-19 awareness, personality development, and skill development holistic development are conducted regularly.

- All these activities impact on the overall development of the Students.
- It promotes awareness about social responsibility among students.
- It helps to improve different skills, physical and mental health of the students.

File Description	Document
Upload Additional information	View Document
Provide Link for Additional information	View Document

3.4.3

Number of extension and outreach programs conducted by the institution through NSS/NCC/Red cross/YRC etc., (including the programmes such as Swachh Bharat, AIDS awareness, Gender issues etc. and/or those organised in collaboration with industry, community and NGOs) during the last five years

Response: 39

3.4.3.1 Number of extension and outreach Programs conducted in collaboration with industry, community, and Non- Government Organizations through NSS/ NCC/ Red Cross/ YRC etc., year wise during the last five years

2021-22	2020-21	2019-20	2018-19	2017-18
12	04	08	06	09

File Description	Document
Upload supporting document	View Document
Institutional data in the prescribed format	View Document

3.5 Collaboration

3.5.1

Number of functional MoUs/linkages with institutions/ industries in India and abroad for internship, on-the-job training, project work, student / faculty exchange and collaborative research during the last five years.

Response: 05

File Description	Document
Upload supporting document	View Document
Institutional data in the prescribed format	View Document

Criterion 4 - Infrastructure and Learning Resources

4.1 Physical Facilities

4.1.1

Availability of adequate infrastructure and physical facilities viz., classrooms, laboratories, ICT facilities, cultural activities, gymnasium, yoga centre etc. in the institution

Response:

4.1.1: Availability of adequate infrastructure and physical facilities viz., classrooms, laboratories, ICT facilities, cultural activities, gymnasium, yoga center etc. in the institution.

Response: -

- The Institution has adequate infrastructure and physical facilities for teaching- learning. viz., classrooms, laboratories, computing equipment etc.
- The institution has adequate infrastructure and physical facilities for teaching-learning as follows:
- The institution decides the policy by considering the strength of the students of the various classes.
- The IQAC and the HOI communicates the needs and required facilities to the management and it offers the necessary funds for infrastructural facilities.
- Broadly speaking, the institution is not big one it has classrooms, seminar halls, commerce lab and small language lab for teaching learning.
- The classroom with sufficient ventilation.
- Seminar halls will equip with LCD projector is used for all programs.
- Language lab with lingua-phones increases the interest of the student.
- Examination department assess the students for their examination as well as clearance of grievances.
- Library provides the students with books, journals, reference books, Internet, newspaper etc.
- Administrative office is established separately with advance technological facilities.
- A meeting hall is used to conduct the academic and administrative meetings.
- Other physical facilities like principal office, cycle stand, two & four-wheeler parking are available.
- Separate rest room with attached urinals and Latria for girl students only.
- Gymkhana provides the facilities for indoor and outdoor games with certain equipment.
- The institution has adequate facilities for Cultural, Sports, Games (indoor and outdoor) Gym, Yoga Centre as follows:

Cultural activities:

- The cultural activities are arranged at prize distribution ceremony and equal sports day.
- The institution makes arrangements of the huge Paudal in the ground the institution bears the expenditure.
- The cultural activities are conducted in seminar hall.
- The institution shows very much better performance the field of sports.
- The students participate in various Inter College and zonal university level tournaments.

- The institution had some facilities for indoor and outdoor games

- **Indoor games:**

- The institution has Gymkhana hall.
- The students play indoor games like table tennis, weightlifting, chess board and carrom board.
- The institution has sufficient playground for outdoor games.
- The students play Kabaddi, Kho-Kho, Volleyball, Netball and Badminton the details of the playgrounds as follows:

Sr. No.	Name of the Ground	No. of Grounds	Dimension (mts)
1.	Kabaddi	02	13x10
2.	Kho- Kho	01	30x16
3.	Net Ball	01	100x50
4.	Ball- Badminton	01	24x12
5.	Volley Ball	01	19x9

Yoga Centre:

- The Institutions celebrate International yoga day for a week.
- It arranges yoga program in open space, seminar hall and Gymkhana.

File Description	Document
Upload Additional information	View Document
Provide Link for Additional information	View Document

4.1.2

Percentage of expenditure, excluding salary for infrastructure augmentation during last five years (INR in Lakhs)

Response: 100

4.1.2.1 Expenditure for infrastructure augmentation, excluding salary during the last five years (INR in lakhs)

2021-22	2020-21	2019-20	2018-19	2017-18
04	6.5	00	0.5	04

File Description	Document
Upload supporting document	View Document
Institutional data in the prescribed format	View Document

4.2 Library as a Learning Resource

4.2.1

Library is automated using Integrated Library Management System (ILMS), subscription to e-resources, amount spent on purchase of books, journals and per day usage of library

Response:

4.2.1 Library is automated using Integrated Library Management System (ILMS), subscription to e-resources, amount spent on purchase of books, journals and per day usage of library.

Response :

Library is learning resource of college with fully automated through library manager system software. The college library is partially automated from the year 2015-16. The library manager software consist of module like book Accession, OPAC catalogue and administration etc. The status of book can be easily find out.

- **The details of library software are follows:**

1. Name of library software: Library Manager.
2. Nature of automation: Partially automated.
3. Version: 2.0.0.
4. Year of Automation: 2015-16
5. Date of Purchase: 23/11/2015.

- All books are equipped with bar-coding in accession is performed by library software. In library sufficient computers are available with internet facilities.
- The library has collection of various Reference Books, Text Books, journals and books etc.

The Institution has its IT Policy

- Computers, Laptop, Copiers, Scanners and LCD, Projectors are among IT resources available at the college.
- The institution has a developed IT infrastructure to meet the needs of the students and faculty for the improvement in teaching and learning.
- CCTV cameras are installed everywhere for the security.
- A Local Area Network (LAN) is used.
- 4 Net connections in office, 01 in principal's cabin, 01 in seminar hall 01 in computer lab and 03

Net connections are used among the premises.

- 01 Net connection is separately used in the examination room for examination purpose only.
- College offices saves student's data and admission brochure It is used for the provision to account student's extension activities.

Per day use of Library

Academic Year	Total Users	Library working days	Average No. of Users
2017-2018	19175	295	65 Per day
2018-2019	17169	291	59 Per day
2019-2020	13847	227	61 Per day
2020-2021	3375	75	45 Per day
2021-2022	17280	288	60 Per day

File Description	Document
Upload Additional information	View Document
Provide Link for Additional information	View Document

4.3 IT Infrastructure

4.3.1

Institution frequently updates its IT facilities and provides sufficient bandwidth for internet connection

Response:

4.3.1 The Institution frequently update its IT facilities and provides sufficient bandwidth for internet connection.

Response: -

The institutional established systems and procedures for maintaining and utilizing physical academic and support facilities laboratory, library, Sports Complex, Computers, Classrooms etc as follows:

Laboratory :

1. Class 4th staff clean/sweep the laboratory.
2. Administration office makes financial provision for the maintenance of the equipment's.

Library :

1. Peons and the Students from 'earn and learn' scheme sweep and clean it every day.
2. Outdated edition/textbooks are kept aside.
3. The total expenditure for the books is decided by the advisory committee.

Sports Complex :

The Sports Complex is looked after and maintained by under the supervision of the physical director as:

1. The Gymkhana and ground are cleaned by the peons regularly.
2. Minor repairs of the equipment's and instruments are made by physical director himself.
3. Provisional budget is prepared by Gymkhana committee to buy equipment's and hosiery.

Computer Lab:

1. Lab technician maintain the computer lab.
2. Minor repairs is done by the staff.
3. Budgetary provision is prepared by the institution itself.

Class Rooms:

1. The classrooms are kept clean by the peons.
2. The institution approved the maintenance with financial support.
3. ICT classrooms are maintained by the technician.

CCTV:

1. The entire campus is brought under CCTV surveillance.
2. 15 CCTV cameras are installed in the campus.

Internet, Wi-Fi and LAN Facility:

1. The institute has 100 MBPS TATA communication Leased Line Internet Connection to provide internet and Wi-Fi facility.
2. All the departments have LAN with an internet facility.
3. The institute always prefers topurchase branded equipment/instruments or accessories as per the need of the departments.
4. Entire college campus is connected with Wi-Fi Facility.

File Description	Document
Upload Additional information	View Document
Provide Link for Additional information	View Document

4.3.2

Student – Computer ratio (Data for the latest completed academic year)

Response: 9.72

4.3.2.1 Number of computers available for students usage during the latest completed academic year:

Response: 60

File Description	Document
Upload supporting document	View Document

4.4 Maintenance of Campus Infrastructure**4.4.1**

Percentage of expenditure incurred on maintenance of infrastructure (physical and academic support facilities) excluding salary component during the last five years (INR in Lakhs)

Response: 76

4.4.1.1 Expenditure incurred on maintenance of infrastructure (physical facilities and academic support facilities) excluding salary component year wise during the last five years (INR in lakhs)

2021-22	2020-21	2019-20	2018-19	2017-18
0.4	6.5	00	0.5	04

File Description	Document
Upload supporting document	View Document
Institutional data in the prescribed format	View Document

Criterion 5 - Student Support and Progression

5.1 Student Support

5.1.1

Percentage of students benefited by scholarships and freeships provided by the Government and Non-Government agencies during last five years

Response: 78.79

5.1.1.1 Number of students benefited by scholarships and freeships provided by the Government and Non-Government agencies year wise during last five years

2021-22	2020-21	2019-20	2018-19	2017-18
441	465	475	499	483

File Description

Document

Upload supporting document

[View Document](#)

Institutional data in the prescribed format

[View Document](#)

5.1.2

Capacity building and skills enhancement initiatives taken by the institution include the following

1. Soft skills
2. Language and communication skills
3. Life skills (Yoga, physical fitness, health and hygiene)
4. ICT/computing skills

Response: A. All of the above

File Description

Document

Upload supporting document

[View Document](#)

Institutional data in the prescribed format

[View Document](#)

5.1.3

Percentage of students benefitted by guidance for competitive examinations and career counseling offered by the Institution during the last five years

Response: 3.4

5.1.3.1 Number of students benefitted by guidance for competitive examinations and career counselling offered by the institution year wise during last five years

2021-22	2020-21	2019-20	2018-19	2017-18
32	0	25	34	11

File Description**Document**

Upload supporting document

[View Document](#)

Institutional data in the prescribed format

[View Document](#)**5.1.4**

The Institution has a transparent mechanism for timely redressal of student grievances including sexual harassment and ragging cases

- 1.Implementation of guidelines of statutory/regulatory bodies**
- 2.Organisation wide awareness and undertakings on policies with zero tolerance**
- 3.Mechanisms for submission of online/offline students' grievances**
- 4.Timely redressal of the grievances through appropriate committees**

Response: A. All of the above

File Description**Document**

Upload supporting document

[View Document](#)**5.2 Student Progression****5.2.1**

Percentage of placement of outgoing students and students progressing to higher education during the last five years

Response: 17.75

5.2.1.1 Number of outgoing students placed and / or progressed to higher education year wise during the last five years

2021-22	2020-21	2019-20	2018-19	2017-18
13	13	05	04	06

5.2.1.2 Number of outgoing students year wise during the last five years

2021-22	2020-21	2019-20	2018-19	2017-18
64	52	48	35	32

File Description**Document**

Upload supporting document

[View Document](#)

Institutional data in the prescribed format

[View Document](#)**5.2.2**

Percentage of students qualifying in state/national/ international level examinations during the last five years (eg: JAM/CLAT/GATE/ GMAT/ CAT/ GRE/ TOEFL/ Civil Services/State government examinations)

Response: 100

5.2.2.1 Number of students qualifying in state/ national/ international level examinations (eg: JAM/CLAT/NET/ SLET/ GATE/ GMAT/CAT/GRE/ TOEFL/ Civil Services/ Judicial Services/Public Prosecution services/All India Bar Exams/State government examinations) year wise during last five years

2021-22	2020-21	2019-20	2018-19	2017-18
01	00	00	00	02

5.2.2.2 Number of students appearing in state/ national/ international level examinations (eg: JAM/CLAT/NET/ SLET/ GATE/ GMAT/CAT,GRE/ TOFEL/ Civil Services/ State government examinations) year wise during last five years

2021-22	2020-21	2019-20	2018-19	2017-18
01	00	00	00	02

File Description**Document**

Upload supporting document

[View Document](#)

Institutional data in the prescribed format

[View Document](#)

5.3 Student Participation and Activities

5.3.1

Number of awards/medals for outstanding performance in sports/ cultural activities at University / state/ national / international level (award for a team event should be counted as one) during the last five years

Response: 19

5.3.1.1 Number of awards/medals for outstanding performance in sports/cultural activities at national/international level (award for a team event should be counted as one) year wise during the last five years

2021-22	2020-21	2019-20	2018-19	2017-18
07	00	05	05	02

File Description

Document

Upload supporting document

[View Document](#)

Institutional data in the prescribed format

[View Document](#)

5.3.2

Average number of sports and cultural programs in which students of the Institution participated during last five years (organised by the institution/other institutions)

Response: 6.2

5.3.2.1 Number of sports and cultural programs in which students of the Institution participated year wise during last five years

2021-22	2020-21	2019-20	2018-19	2017-18
27	04	00	00	00

File Description

Document

Upload supporting document

[View Document](#)

Institutional data in the prescribed format

[View Document](#)

5.4 Alumni Engagement

5.4.1

There is a registered Alumni Association that contributes significantly to the development of the institution through financial and/or other support services

Response:

The institution has formed alumni association but it is not registered yet. The institution conducts alumni council's meetings twice a year and also conduct alumni meet once a year. The co-ordination with the alumni is achieved through alumni meets as well as they are asked to deliver lectures for their success stories to the next generation of young students who get inspiration for their bright future. The alumni are invited for the annual day function, Anand Bazaar, sport activity, tree plantation etc. of the college in which they actively participate. The members of alumni association suggest innovative ideas to the institution.

File Description	Document
Upload Additional information	View Document
Provide Link for Additional information	View Document

Criterion 6 - Governance, Leadership and Management

6.1 Institutional Vision and Leadership

6.1.1

The governance and leadership is in accordance with vision and mission of the institution and it is visible in various institutional practices such as decentralization and participation in the institutional governance

Response:

6.1.1 The Governance and Leadership Is In Accordance with vision and mission of the institution and it is visible in various institutional practices such as a decentralization and participation in the institutional governance

- The vision and mission statement of the Institution on the nature of governance, perspective plans and participation of the teachers in the decision making bodies of the institution is appropriate.
- The institution has decided its vision, mission and objectives clearly this are communicated to students, teachers, staff and Stakeholders.
- The vision of the institution is to provide and facilitate qualitative higher educational opportunities to the socio economically backward and marginalized sections of the society. The institution try its best to observe it through Its good Governance.
- The mission, goals and objectives of the institution are strictly followed by its students, teachers and staff.
- The institution tries to implement its mission and addresses the needs of the society students the institutions, Traditions and value of the orientations.
- The institution tries its best to impact quality education to students at affordable costs.
- The institution aims at higher education for the rural I students especially girls through its vision, Mission and objectives. So the More number of girl Students in the institution.
- The HOI of the institution prepares academic Calenders with the help of the staff and implement it strictly.
- The effective leadership is visible in various institutional practices such as decentralization and participative management.
- The HOI conducts frequent meetings with the staff, distribute the work among them for the smooth conduction of the work.
- The chairpersons and the members of the various committeesplan and design the framework with the help of the HOT.
- Some teachers work as IQAC members and play the vital Roleforthe development of the students as well as theinstitution.
- The facilities acquire the position as chairperson as well Members in different bodies and committees and work whole heartedly.
- The students of the institution also work, as the members in different committees of the institution.
- The HOD's are given full support to take decisions in their routine works at co-curricular and extra-curricular activities.
- The faculty members are encouraged to development leadership skills by being in charge of

various academic, Curricular and extra-curricular activities of the institution.

- The Collegedevelopment Committee (CDC) includes at least 3 members flow faculties and 1 member of non-teaching.
- Meetings with Alumni and Parents are conducted every year and feedback is taken for necessary improvements.

File Description	Document
Upload Additional information	View Document

6.2 Strategy Development and Deployment

6.2.1

The functioning of the institutional bodies is effective and efficient as visible from policies, administrative setup, appointment and service rules, procedures, deployment of institutional Strategic/ perspective/development plan etc

Response:

6.2.1 The functioning of the institutional bodies is effective and efficient as visible from policies, administrative set up, appointment and service rules, procedures, deployment of institutional strategies / perspective/development plan etc.

- The institution appoints its staff according to the rules and regulations of the parent university
- Service Rules and procedures are made clear at the time of Appointment
- The following Organization of the institution make Clear the functioning is efficient and effective

Organizational Structure:-

President

|

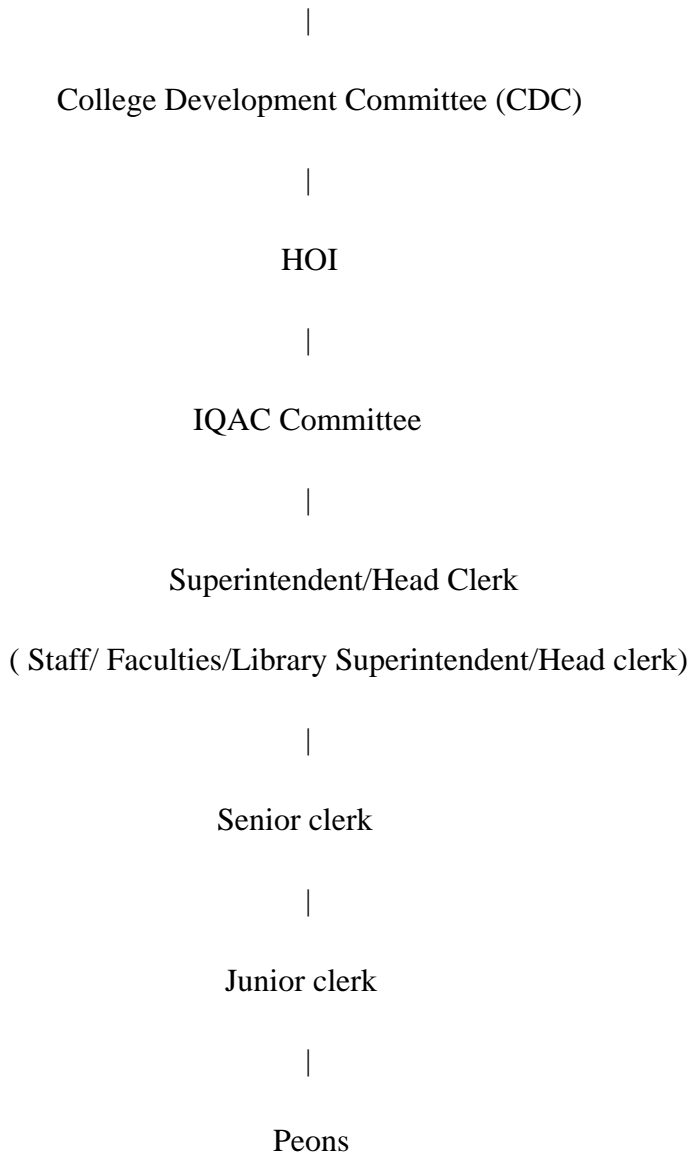
Vice-president

|

Secretary

|

Institution



- The flow of authority and monitoring system works as the following
- Principal (HOI) - Academic Staff –Administrative Staff-Office Superintendent -Head Clerk -Senior Clerk -Junior clerk - Peons
- The Institution has finally stated quality policy it is clearly stated in the Mission .It is developed and viewed by the continuous efforts of all. It promotes the improvements and development of the institution.
- The institution has a perspective plan for development through it. The institution facilities the library with more book and journals as well as advance technological facilities.
- The Institution wish to establish will equipped library and virtual class rooms for the students.
- The members of the education society elect the member of the management. The members of the management elect the chairperson. Chairperson conducts the meetings of the members take decisions and communicate the taken decisions to HOI by the secretary.
- The decisions related to curricular, co-curricular and extracurricular activities administration are taken by HOI and this are carried out by the faculty members
- The HOI communicates the decisions at the Management level to the HOI, chairpersons and Member of the different Committers As she implementations. The decisions stated to co-

curricular and administration

- College development committee conduction meetings toys year taken decisions regarding improvements and developments.
- HOI Institution various committees for the good governors and effective deployment of its strategies and perspective plans.

File Description	Document
Upload Additional information	View Document

6.2.2

Implementation of e-governance in areas of operation

1. Administration
2. Finance and Accounts
3. Student Admission and Support
4. Examination

Response: A. All of the above

File Description	Document
Upload supporting document	View Document

6.3 Faculty Empowerment Strategies

6.3.1

The institution has effective welfare measures and Performance Appraisal System for teaching and non-teaching staff

Response:

6.3.1 The institution has effective welfare measures and performance Appraisal system for teaching and non-teaching staff.

Response: -

- The management encourages and supports involvement of the total staff in the improvement and well being of all with the help of HOI.
- The Institution promotes the faculties for research work with full support.
- The Institution allows everyone to attend different seminars, workshops, symposia to update the knowledge.

- The institution gives freedom for curricular, co-curricular and extra-curricular activities.
- The institution grants duty leave, registration fees and the faculties who participate in different workshops, seminars, conferences at state and national level.
- The institution provides the facility of the life insurance of Rs. 40 lacs with the help of Bank of Maharashtra to its teaching staff.
- The institution provides the legal documents to obtain the loans from banks and the teacher's society.
- The institution provides the necessary documents for Mediclaim medical bills to its staff and medical leave is granted to the staff.
- The institution fully supports for active participation of all staff each and every activity for students and teachers the GPF Facility is provided to every faculty and staff.
- The performance Appraisal system of the staff evaluate and ensure that the information on multiple activities appraisal. ·
- In-house sessions are conducted by the head of the institution.
- An update record of lectures of teaching faculties is kept.
- At the end of every academic year all the faculty members fill up their self-appraisal form. These forms are submitted to the IQAC through HOI. These are analyzed and evaluated by HOI. Thus, the HOI suggests improvements in the performance of the faculties.
- The outcomes of the performance appraisal reports by the institution and the major decisions taken are communicated to the appropriate staff members.
- The institutional management and the HOI take proper decision on individual confidential report the faculties it is communicated through notice and discussion.
- The HOI also advise the institutional management to reward the faculties for their excellent performance in various activities.
- The Analysis report and the Action taken Report (ATR) of the staff appraisals are stamped and duly signed by the HOI and the record is preserved for further action.

File Description	Document
Upload Additional information	View Document

6.3.2

Percentage of teachers provided with financial support to attend conferences/workshops and towards membership fee of professional bodies during the last five years

Response: 27.5

6.3.2.1 Number of teachers provided with financial support to attend conferences/workshops and towards membership fee of professional bodies year wise during the last five years

2021-22	2020-21	2019-20	2018-19	2017-18
02	00	08	04	08

File Description	Document
Upload supporting document	View Document
Institutional data in the prescribed format	View Document

6.3.3

Percentage of teaching and non-teaching staff participating in Faculty development Programmes (FDP), professional development /administrative training programs during the last five years

Response: 14.17

6.3.3.1 Total number of teaching and non-teaching staff participating in Faculty development Programmes (FDP), professional development /administrative training programs during the last five years

2021-22	2020-21	2019-20	2018-19	2017-18
11	04	00	01	01

6.3.3.2 Number of non-teaching staff year wise during the last five years

2021-22	2020-21	2019-20	2018-19	2017-18
08	08	08	08	08

File Description	Document
Upload supporting document	View Document
Institutional data in the prescribed format	View Document

6.4 Financial Management and Resource Mobilization**6.4.1**

Institution has strategies for mobilization and optimal utilization of resources and funds from various sources (government/ nongovernment organizations) and it conducts financial audits regularly (internal and external)

Response:

6.4.1 The Institution has strategies for mobilization and optimal utilization of resources and funds from various sources (Government /nongovernment organization) and it conducts financial audits regularly (internal and external)

Response: -

- For effective and efficient use of the financial resource the budget and cash flow statement is prepared by the institution and it is approved by the Belapur Education Society at the outset of every academic year.
- The financial resource is available through various scholarships and free ships of OBC, SC, ST, NT etc.
- All the financial resources are managed with the help of college development committee (CDC) and HOI and its internal and external audit is done by a Chartered Accountant.
- The additions in the audit report are prepared year wise and not only in the assessment year.
- Audited Reports are preserved by the office of the institution.
- A separate income and expenditure statement of the every academic year is made and preserved.
- The major resources of funds for institution are the admission fees from the students.
- Various grants received from BCUD and Savitribai Phule Pune University.
- Being an aided institution, the grants are received from state Government of Maharashtra.
- Belapur Education Society governs the institution and make sufficient financial management.
- The institution also submits the proposals for getting financial assistance from SPPU to organize seminars, conferences, workshops and research projects.
- The institution receives grants and utilizes for the same purpose.
- The institution maintains the separate registers for Gymkhana, playground, library, computer lab, seminar hall etc.
- A separate income and expenditure statement is prepared and its audit at the end of every academic year from a chartered accountant is done.
- The IQAR assists to prepare academic calendar.
- Motivates the faculties for preparation of teaching plans and maintain teaching diaries.
- Promote to organize guest lectures, seminars, workshops and conferences.
- Monitors the curricular, co-curricular and extra-curricular and research work.
- Encourages faculty members for M Phil / Ph.D and research work.
- Motivates to publish books and research papers.
- Execute activities of teaching learning proposed by the departments.
- Promotes quality in teaching learning research, governance student's support and progression.
- Suggests development in various academic and administrative activities of the institution.
- Assists in decision making policies like financial issues.
- Promotes students facilitative center academic and administrative audit (AAA).
- Promotes SWOC analysis and website updating, staff welfare initiatives, training programme.
- FDP's for teaching staff etc.

File Description	Document
Upload Additional information	View Document

6.5 Internal Quality Assurance System

6.5.1

Internal Quality Assurance Cell (IQAC) has contributed significantly for institutionalizing the quality assurance strategies and processes. It reviews teaching learning process, structures & methodologies of operations and learning outcomes at periodic intervals and records the incremental improvement in various activities

Response:

6.5.1 Internal Quality Assurance Cell (IQAC) has contributed significantly for institutionalizing the quality assurance strategies and processes. It reviews teaching learning process, structures and methodologies of operations and learning outcomes of periodic interval and records the incremental improvement in various activities.

Response: -

- The AQAR assists to prepare academic calendar.
- Motivates the faculties for preparation of teaching plans and maintain teaching diaries.
- Promotes to organize guest lectures, seminars, workshops and conferences.
- Monitors the curricular, co-curricular and extra-curricular and research work.
- Encourages faculty members for M.Phil / Ph.D and research work.
- Motivates to publish books and research papers.
- Execute activities of teaching learning proposed by the departments.
- Promotes quality in teaching learning research, governance student's support and progression.
- Suggests development in various academic and administrative activities of the institution.
- Assists in decision making policies like financial issues.
- Promotes students facilitative centre academic and administrative audit (AAA).
- Promotes SWOC analysis and website updating, staff welfare initiatives, training programme. FDP's for teaching staff etc.
- The HOI, the HOD's and the IQAC coordinator are the members of policy planning and effective implementation as per vision and mission for continuously review of teaching learning process.
- Regular attendance is compulsory for students.
- Monitoring classes class hours are fixed. The assignments are corrected within the short period, all these mechanisms are helpful for the academic progress, of the students.
- The evaluation of teaching learning process through feedback system is in practice.

Methodology of Operation

- The students give feedback about the teachers and subjects at the end of the academic year.
- The IQAC analyse the feedback.
- The HOI communicates the strengths and weaknesses from the feedback to the concerned faculty members.
- The HOI also communicates the reports of the feedback to the management.
- Effecting and smooth functioning of teaching learning process improvements in academic results and quality of the institution are the outcomes of IQAC and these are communicated to stakeholders through notices news alumni association parents meet.
- IQAC take initiative for compliance of previous suggestions by NAAC peer team. · Defines and

observes the course objectives CO's, Po's and PSO's.

File Description	Document
Upload Additional information	View Document

6.5.2

Quality assurance initiatives of the institution include:

- 1.Regular meeting of Internal Quality Assurance Cell (IQAC); Feedback collected, analysed and used for improvements**
- 2.Collaborative quality initiatives with other institution(s)/ membership of international networks**
- 3.Participation in NIRF**
- 4.any other quality audit/accreditation recognized by state, national or international agencies such as NAAC, NBA, ISO Certification etc**

Response: C. Any 2 of the above

File Description	Document
Upload supporting document	View Document
Institutional data in the prescribed format	View Document

Criterion 7 - Institutional Values and Best Practices

7.1 Institutional Values and Social Responsibilities

7.1.1

Measures initiated by the Institution for the promotion of gender equity and Institutional initiatives to celebrate / organize national and international commemorative days, events and festivals during the last five years

Response:

The institution provides co-education to maintain gender equity at all levels in the campus. The institution organizes co-curricular and extracurricular activities to achieve gender equity and sensitize students about it, through student welfare committee, National service scheme and women empowerment cell. The programmes like personality development, female feticide oath, HB checkup camps, Karate Training, Guest Lecture series, HIV and AIDS counseling, Youth Week, Annual Winter Sports Competitions, Special Guidance Scheme, Educational trip, Anniversaries of National leaders and heroes promotes students towards gender sensitization. The women empowerment cell also arranges the different programmes like workshops, different Training programmers, women health and hygiene, women's rights and laws. It also celebrates International Women's Day and honors the women as well as empower the women from different sectors of society.

The institution is located in the rural area. The students from the rural area especially the girls' students could graduate themselves is the initiative to the lame foundation of the institution. Thus, institutions take lead to the gender discrimination. Institution promotes the girl students for their well-being by its various co-curricular and extracurricular activities. Girl students are preferred for admission. The result is that there are more than 50% admissions of the girl students in the institution.

College students face much more physical, mental and social problems. Destination provides counseling for such students with the help of its faculty members. The institution provides the facility of common room for the girls' students. The institution gives admission to girl students who are married and having children, so it provides a daycare center 'Hirakani Cupshup' for such students.

National and International commemorative days, events and festivals: -

The institution prepared a cultural committee to celebrate and conduct different National and International commemorative days, events and festival. On such occasions various competitions, motivational speeches of speakers are arranged for the students. Days like Independence day, Republic day, Maharashtra day are celebrated enthusiastically to pay tribute to freedom fighters. Such events create awareness among the students about national integrity. The birth and death anniversaries of eminent personalities, freedom fighters, and national leaders are celebrated to commemorate their work.

Other days like Constitution Day, World Women's Day, Human Right Day, Voter Day, National Sports Day, Youth Day, AIDS Day, Environment Day, Yoga Day are celebrated in the institution. These days are celebrated to mark an important aspect of human life and history.

File Description	Document
Upload Additional information	View Document
Provide Link for Additional information	View Document

7.1.2

The Institution has facilities and initiatives for

- 1. Alternate sources of energy and energy conservation measures**
- 2. Management of the various types of degradable and nondegradable waste**
- 3. Water conservation**
- 4. Green campus initiatives**
- 5. Disabled-friendly, barrier free environment**

Response: A. 4 or All of the above

File Description	Document
Upload supporting document	View Document

7.1.3

Quality audits on environment and energy regularly undertaken by the Institution. The institutional environment and energy initiatives are confirmed through the following

- 1. Green audit / Environment audit**
- 2. Energy audit**
- 3. Clean and green campus initiatives**
- 4. Beyond the campus environmental promotion activities**

Response: C. Any 2 of the above

File Description	Document
Upload supporting document	View Document

7.1.4

Describe the Institutional efforts/initiatives in providing an inclusive environment i.e., tolerance and harmony towards cultural, regional, linguistic, communal socioeconomic diversity and Sensitization of students and employees to the constitutional obligations: values, rights, duties and responsibilities of citizens (Within 500 words)

Response:

Cultural: -

- Cultural tolerance and harmony are attained by different celebrations in the premises of the institution.
- The institution arranges various cultural programs of the different types of religious groups to abide them together.
- The students from different casts and creeds take their education in the institution in friendly manner.
- The institution celebrates the death and Birth anniversaries of the leaders/ heroes from the different cultures happily.
- The festivals of the different culture are celebrated by the institution.
- The institution conducts cultural programs of the different casts and religious. It includes, annual social gathering, Drapery Day.

Regional: -

- The institution admits students from different regions with priority.
- The institution does not allow any type of regional discrimination for the admission.
- In the institution Gujrathi, Marwadi and Rajasthani students take their education happily.

Linguistic Harmony: -

- The institution celebrates the birth and death of the well-known writers from different authors of languages.
- The institution creates integrity among its students by celebrating Rashtra Bhasha day, Marathi Bhasha Din. Reading Inspirational Day, etc.
- The Institution tries its best to minimize the discrimination of all cultural, linguistic, communal and socio-economic harmony by making dress-code compulsory.

Communal and socio-economic Harmony: -

- The institution admits the students from different communities and socio-economic groups.
- Hindu, Muslim, Jain, Christian students are learning in the institution.

Constitutional Obligation:-

- The institution maintains environment through different practices. recruitment process for staff is transparent and as per the norms of government, affiliating university and UGC. Students are admitted as per the reservation policy of the government of Maharashtra. Statistical analysis of admission and participation of students in extracurricular activities such as NSS, show that the institution maintains inclusive environment.
- The institute tries to sensitize students to the constitutional values of freedom, equality, fraternity organization of justice. The institution focusses on strengthening of social economic and political dimension of our democracy through participation in different activities of the government of India and state government.
- Students and faculties members are sensitized towards constitutional values awareness programs about gender equity and national integrity for responsible citizenship.
- The parent university Savitribai Phule Pune University has prescribed compulsory course on

‘Democracy, election and Governance’ for first year under graduate program, which helps students to understand the meaning of democracy and the role of governance in Indian democracy. Thus, it creates awareness among students about the human values, fundamental right and duties given to citizens by the constitution.

- The institution provides more scope for these students by celebrating their communal festivals.

File Description	Document
Upload Additional information	View Document
Provide Link for Additional information	View Document

7.2 Best Practices

7.2.1

Describe two best practices successfully implemented by the Institution as per NAAC format provided in the Manual

Response:

7.2. Best Practices:

7.2.1 Describe two best practices successfully implemented by the institution as per NAAC format in the manual.

1. Title of the Best Practice:- Karate Training Course

Objectives:-

1. To improve the capacity among the rural girl students to face the calamities bravely.
2. To develop leadership among the girl students.
3. To prepare the girl students for self-defense.

The Context:

The vision of the institution is to provide and facilitate the students qualitative higher educational opportunities to the socio-economically backward and marginalized section of the society, especially the girl students. It increases the ratio of girls in higher education from the rural area. The institution wants to improve the status of the rural girls students through education. It decides to develop the overall personality of the girl students.

More number of girl students attend the college regularly on bicycles, but the girls we found were having ill health. This practice makes them more healthy, strong and stout. It improves their personality, punctuality and concentration.

The Practice:

1. One faculty member is appointed as a coordinator for this course programme.
2. The institution had made a tie up with 'Abhinav Karate Training' institute to train the girl students.
3. The trainer/master conducts the training programme before the commencement of the regular classes.
4. First of all, warm-up exercise is done and the actual training begins. The master trains the girl students in all aspects of Karate.

Evidence of Success:

1. The level of self confidence has increased.
2. Self defense ability is improved.
3. It increases baldness among girl students
4. Physical and mental health become strong.

Problems Encountered and Resources Required:

1. Orthodoxical mentality of parents and students.
2. Financial problems.
3. The Resources of man is required.

Practice: 02

1. Title of the practice:

Commerce Festival 'Anand Bazar'.

2. Objectives:

1. Help to minimize the problem of unemployment.
2. To train the students about business skills.
3. To improve the quality of entrepreneurship.
4. To organize the development activities in the field of entrepreneurship.
5. To promote the student to professions which are helpful to society.
6. To develop the capacity based interest among students.

3. The context:

To inculcate the professional skills in the students and to make them aware of the knowledge of entrepreneurship. The institution is located in a rural area. The rural economy is affected and damaged by

the frequent draughts, uncertainty of agricultural products, low rate for the agricultural products and fraud policies of the traders. The result is that the youth is diverted towards the urban area.

The youth in rural areas are shy even today. They find the lack of self-confidence in them. To inculcate the professional skills in them and to make them aware of the knowledge of entrepreneurship. The institution promotes them to choose the profession which could be started at the local level. While acquiring the knowledge of the profession, the students should not forget their responsibilities towards the society. With this view, the institution has implemented the concept of 'Anand Bazar'.

Practice:

The institution arranges 'Anand Bazar' in the month of January in every academic year. The coordination of the programme elaborates the goal and structure of this programme to the students initially. It promotes the maximum number of students to actively participate in 'Anand Bazar'. The faculties try to understand what kind of business the students want to do and then they guide and prompt the students for that particular business. The stalls are made available in the campus of the institution. The students sell both types of goods i.e. kitchen food stalls and agricultural products. The stalls of funny games are also arranged by some students. Students get pleasure and enjoy entrepreneurship from 'Anand Bazar' during the whole day. The meeting of the stallholders is arranged the very next day and they share their experience in the meeting. The difficulties and problems of the student entrepreneurs are discussed and they are told how to overcome these problems. Best participants of 'Anand Bazar' all facilitated in the Annual Social Gathering and prize distribution ceremony function.

Evidences of Success:

1. Many students are inspired and motivated by the concept of 'Anand Bazar' and start their own businesses.
2. Some students made considerable improvements in their ancestral business and earned name and fame.
3. Agriculture service centers are run by many students.
4. Along with the professional skills, the students become aware of their social responsibilities.

Problems Encountered and Resources Required:

1. The neutrality/ insincerity of students/youth towards hard work.
2. Youth are less interested in small scale businesses.
3. Time limit for the implementation of the programme.
4. Manpower as a resource is required.

File Description	Document
Best practices as hosted on the Institutional website	View Document
Any other relevant information	View Document

7.3 Institutional Distinctiveness

7.3.1

Portray the performance of the Institution in one area distinctive to its priority and thrust within 1000 words

Response:

Vision/Mission:

The vision/ mission of the institution is to provide and facilitate qualities higher educational opportunities to the socio-economically backward students and the marginalized sections of the society. To fulfill its vision/version the institution the lifts following steps:

1. It imparts the quality education to the rural girl students.
2. Promotes to develop various skills among its students.
3. Improve the status of the rural girl students through education.
4. Arranges various programs and function for woman empowerment, conducts different rallies against the exploitation of women and gender discrimination.
5. Provides various physical facilities like 'Hirkani Kaksh' Ladies room etc.
6. Health Programs like Hemoglobin check up and Blood Donation.
7. Special attention is focused to their socialization and mobilization.
8. 'Karate Training Course' as the best practice specially for girl students to impress their capacity and to develop the leadership among girls students. The practice improves the self defense ability.
9. Provides facilities like newspapers, journals, books, internet and E-Library also.
10. Conducts various value-added and enrichment programs to offer holistic development and moral and ethical values.
11. More active participation of girl students in the students council bodies and committees, result in more flow of girl students to the institution.

Other facility

1. Teaching-learning with ICT will be more effective and useful as well as interesting to rural students.
2. The institution tries to increase the ratio of girls in higher education from the rural area.
3. It decides to develop the overall personality of the girls students.
4. The institution arranges the lectures of the eminent scholars to change the arthodoxical attitudes and views of the girls.
5. Expert, eminent and motivational speakers are invited in the institution to bring the change in them.

6. Conducts classroom seminars and group-discussion for girls so that they can be bold in their future.
7. Some of the girl students are already married and having children and find inconveniency in the institution, so the institution provides such girl-students with 'cupshup' cell.
8. Sport department arranges special games and exercise program for the girl-students.
9. It teaches employable and life skills for better career options.
10. Instant on the importance of water conservation, disaster management and environmental awareness.
11. The meritorious girl students are awarded in the annul prize distribution function.
12. The programs like 'Nirbhay Kanya Abhiyan' wipes out the threats, shyness, stupidity from the minds of the rural girls and becomes a bold one.
13. Along with the curriculum, the institution pays attention to improve soft skills, personality development.
14. NSS volunteer's go to the places where the religious programs and functions are arranged. The team helps to clean the whole area, working in the Langar (Kitchen) and serving the food through the gathered people.
15. The strength of the female students more than the strength of the male students because they find the environment of the institution is safe and secure.
16. The more number of students are from poor i.e. below poverty line, and backward class. They have different problems. When they communicate these problems to any faculty member of HOT, the Problem is solved instantly,
17. First there toppers in any class are the gill students.
18. 50% of the total staff have their PhDs.

File Description	Document
Appropriate web in the Institutional website	View Document

5. CONCLUSION

Additional Information :

Under the visionary guidance of the members of the management Arts and Commerce College Belapur was established in Aug 1995 with the specific objectives to empower the youth, especially girl students physically, socially, economically, and psychologically responsible through quality education. The institution affiliated to Savitri Bai Phule Pune University. The institute is located/situated near the banks of Pravara River in rural area. It is 30 km away from Lord Sai Baba's Shirdi and 30km away from Newasa and 32km away from Shani Shignapur.

At present the institute has 1.75 arced of campus as its premises. It has ICT enable classroom, library, and multipurpose halls to facilitate teaching learning process. It is not a well developed instauration but a developing one. Day by day it is developing its self and its students.

The institution was started with the strength of 17 students. In the following academic years strength of the student is increasing rapidly. Among these students there is more number of girl students who are seeking their higher education. The institution is permanently affiliated to Savitri Bai Phule Pune University recently and has 2 (F) affiliations. Soon it will get its 12 (B) affiliated status from UGC after getting the NAAC accreditation certificate of second cycle.

Concluding Remarks :

In the current academic year institution offers 06 UG and program in Arts and Commerce faculty and 02 skill oriented certificate courses, remedial classes and bridge courses which provide the adequate flexibility to graduates framed by affiliating Savitri Bai Phule Pune University with elective options. The Institution has made several innovations which have helped smooth functioning of the Institution. Innovative practices are always employed in the institution. The institution runs innovative practices which have contributed to the achievement of the Institutional objectives and contributed to the quality improvement of the core activities. Among theme college has cited two best practices i.e.

1. Karate Training Course.
2. Commerce festival ' Anand Bazar'.